

Project 1

Kara Walker

Kara Walker

- Walker is best known for her panoramic friezes of cut-paper silhouettes, usually black figures against a white wall, which address the history of American slavery and racism through violent and unsettling imagery.
- She has also produced works in gouache, watercolor, video animation, shadow puppets.
- By casting heroic figures like John Brown in a critical light, and creating imagery that contrasts sharply with the traditional mythology surrounding this encounter, the artist is asking us to reexamine whether we think they are worthy of heroic status.



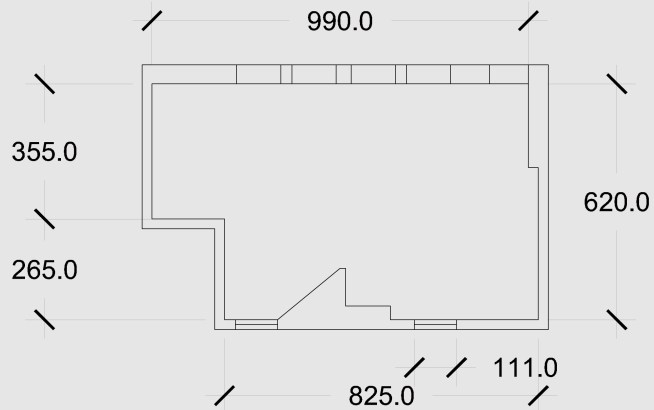


SOME OF Kara Walker's WORKS AND ELEMENTS

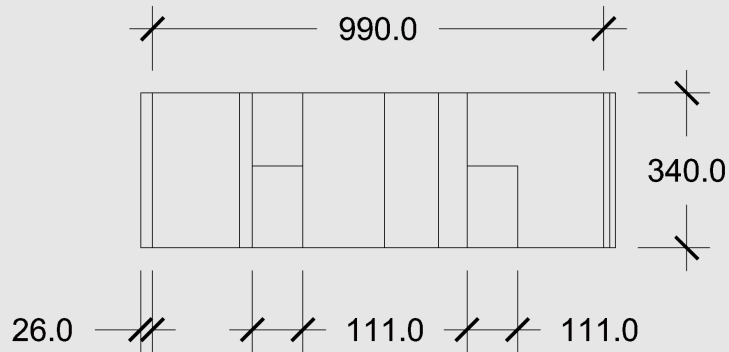


THE PROCESS OF MEASURING THE DIMENSIONS OF A SPACE





PLAN



SECTION

**SOME SILHOUETTES ARE
PROJECTED ON THE
WALLS**

